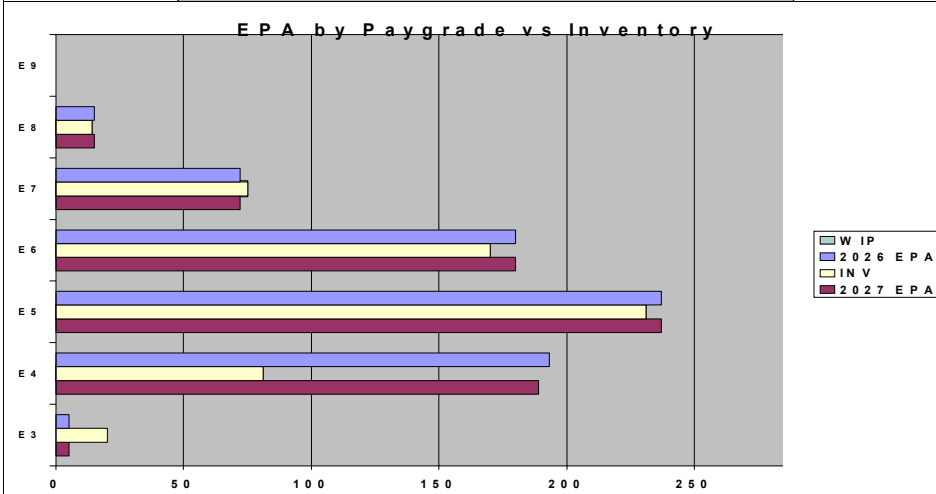
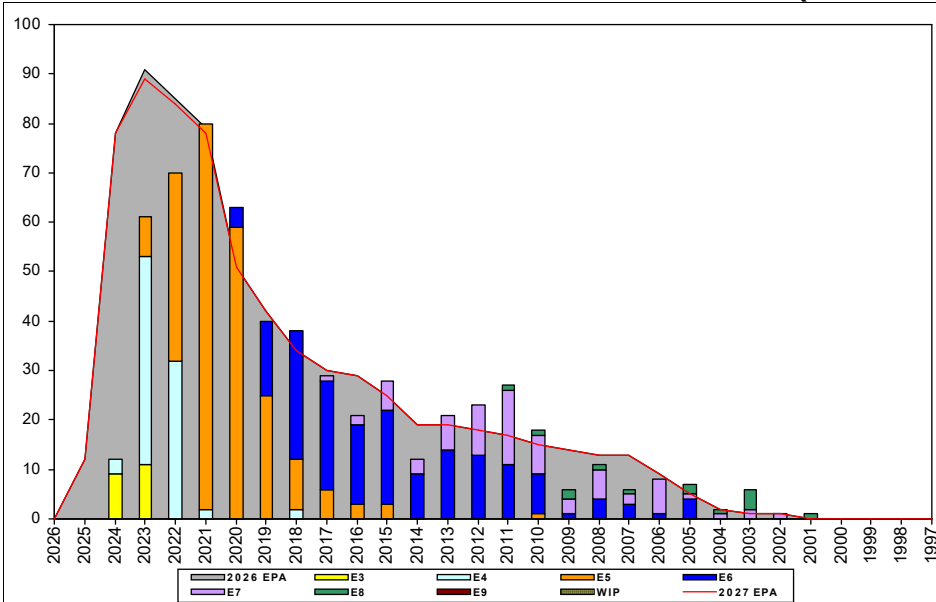


## CTI (East/Far East) - B512



	E1-3	E4	E5	E6	E7	E8	E9	TOTAL
% INV to FY26 EPA	400%	42%	97%	94%	104%	93%		84%
EPA (FY26)	5	193	237	180	72	15		702
INVENTORY	20	81	231	170	75	14		591
EPA (FY27)	5	189	237	180	72	15		698
% INV to FY27 EPA	400%	43%	97%	94%	104%	93%		85%
INV +WIP / FY26 EPA								
INVENTORY			← E-3 and Below WIP					
INV +WIP / FY26 EPA								

### Sea Shore Flow

TOUR	SEA	SHORE
1ST		
2ND		
3RD		
4TH		
5TH		
6TH		
7TH		

### FORCE STRUCTURE MANNING TO BA

PG	SEA	INV	BA	SHORE	INV	BA	SEA + SHORE	TOTAL INV	TOTAL BA
E1-3				#Div/0!	13		#Div/0!	13	
E4	81.3%	13	16	39.4%	67	170	43.0%	80	186
E5	61.1%	22	36	105.9%	196	185	98.6%	218	221
E6	123.8%	26	21	90.0%	135	150	94.2%	161	171
E7	100.0%	20	20	102.0%	51	50	101.4%	71	70
E8	#Div/0!	2		80.0%	12	15	93.3%	14	15
E9									
Total	89.2%	83	93	83.2%	474	570	84.0%	557	663

### TIS to PG Years

Pay Grade	E1-E3	E4	E5	E6	E7	E8	E9
ALL Navy	TIS	2.2	4.0	8.7	13.8	17.8	21.7
CTI	TIS	2.2	3.6	7.3	12.4	18.3	
ALL Navy	TIG	1.3	1.8	4.7	5.7	5.0	4.6
CTI	TIG	1.8	1.5	3.5	5.8	6.1	

### TIG to PG Years

### Zone Info

	ZONE A	ZONE B	ZONE C	ZONE D	ZONE E	ALL ZONES
FY26 Manning:	80.0%	82.0%	93.0%	91.0%	94.0%	84.0%
FYTD RENL Rate:	65.3%	70.5%	84.6%	100.0%	58.3%	71.9%

### NOTES

CHINESE \*\*\*SRB has increased!\*\*\* Please take advantage.  
- Overall CMN Manning is at 87% (INV/BA).

KOREAN \*\*\*ZONE A SRB has increased!\*\*\* Please take advantage.  
- Overall KOR Manning is at 101% (INV/BA).  
- We will always need more KORLINGS than BA due to the short tours in Korea.

Billets are NOW coded for INT/ADV NECs, recommend updating your MNA searches and reaching out to the detailers for further information.

Rating conversions will be considered on a case-by-case basis.

The TECHAD is available at 901-874-2653 for questions.